



SALEM OR | AUBURN WA | SPOKANE WA | RIVERSIDE CA | SACRAMENTO CA



# Metal Roofing & Siding Finish Options

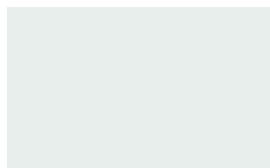
*ArmorTech™ & Weathering Materials*



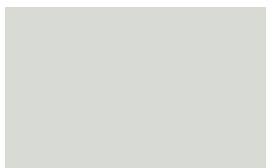
# Standard ArmorTech™ Coatings

40-Year Limited Warranty

**THESE ARE NOT PAINT CODES.** SRI = Solar Reflective Index value.



Polar White SRI-90



Glacier White SRI-85



Stone White SRI-71



Ivory SRI-68



Light Stone SRI-68



Sandstone SRI-55



Hickory SRI-48



Sand Gold SRI-61



Ash Grey SRI-58



Sterling Grey SRI-45



Charcoal Grey SRI-25



Tile Red SRI-33



Tahoe Blue SRI-25



Pacific Blue SRI-25



Sage Green SRI-31



Forest Green SRI-32



Pine Green SRI-29



Desert Brown SRI-24



Cocoa Brown SRI-27



Kodiak Brown SRI-22



Weathered Copper SRI-24



Obsidian Black SRI-NA

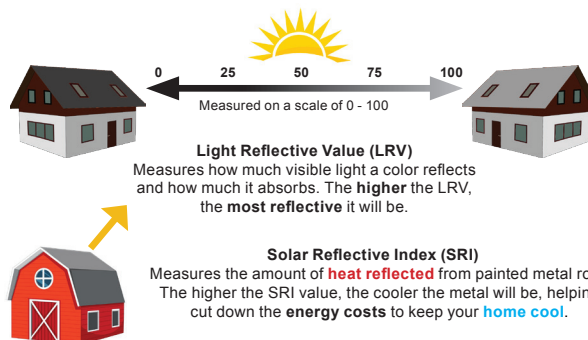


Copper Penny SRI-60

SRI values listed above are in accordance with ASTM E1980 and are based on actual testing (CRRC) Cool Roof Rating Council SRI values (CA Title 24, ENERGY STAR®) are based on the grouping of colors (color families). CRRC SRI values will differ, as each color is not tested in the color family option. Coatings are low gloss 10-15% sheen.

These printed chips provide a close representation of the colors. Metal Samples are available upon request. Custom colors available.

Oil Canning – All light gauge metals can display waviness often referred to as "oil canning". This is caused by steel mill tolerances, substrate variation and relative reflectivity. "Oil canning" is an inherent characteristic of steel products, not a defect, and is not a cause for rejection.



In partnership with:



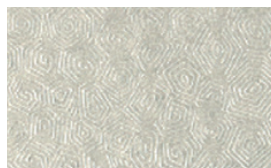
steelscape





# Weathering Materials

*No finish warranty. These materials change appearance overtime*



Zinalume® Plus SRI-65

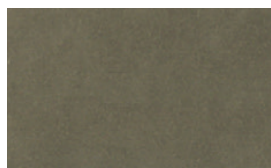
Zinalume® Plus AZ-55 is a 55% aluminum, 45% zinc metallic coating over steel. *No finish warranty – 25 yr. perforation warranty.*

Due to batch differences, color or spangle matching of this product is not available.



Galvanized G-90 SRI-65

*Metallic coating over steel.  
No finish warranty  
No perforation warranty*



Rusteel Plus™ (A606)  
*general appearance prior to  
being exposed to the weather*

Rusteel Plus™ is an ideal design for a historic, weathered look. Rusteel Plus™ is best suited for dryer, less humid environments. Rusteel Plus™ has no metallic coating and offers no warranty. The designer should be aware of rust runoff on decks and concrete without gutter protection or separation. Rusteel Plus™ meets ASTM A606-96 Type A. Type 4 has improved corrosion resistance when compared to carbon steel.



Rusteel Plus™ (A606)  
*potential look after weather exposure*



**“Quality Products, Exceptional Service”**



Other Taylor Metal companies:



ROLLED STEEL PRODUCTS