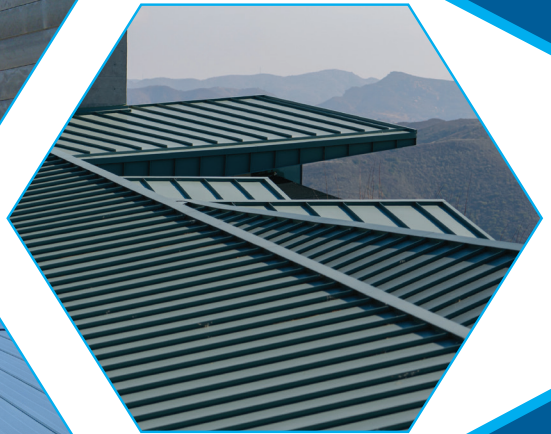
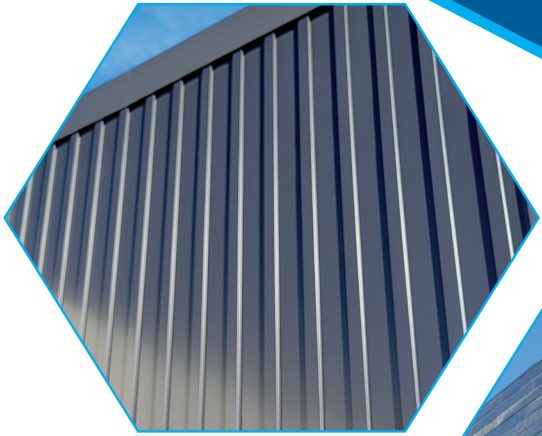


# Metal Roofing & Siding Finish Options

## *SOUTHWEST REGION*

*Standard Kynar, Definitive Matte Collection,  
Metallic Kynar, Premium Finish  
& Weathering Material*



**TAYLOR**  

---

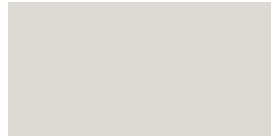
**METAL PRODUCTS**

RIVERSIDE CA | SACRAMENTO CA | SALEM OR | AUBURN WA | SPOKANE WA



## Standard Kynar 500® PVDF Resin

40-Year Residential/20 and 30 Year Commercial Manufacturer's Limited Warranty



Glacier White SRI-85



Sierra Tan SRI-60



Parchment SRI-58



Ash Grey SRI-57



Sterling Grey SRI-44



Zinc Grey SRI-39



Charcoal Grey SRI-25



Saddle Tan SRI-37



Medium Bronze SRI-36



Tahoe Blue SRI-31



Pacific Blue SRI-26



Hemlock Green SRI-36



Forest Green SRI-24



Graphite Black SRI-26



Dark Bronze SRI-22



Musket SRI-31



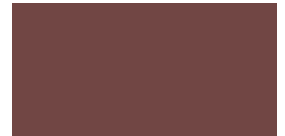
Pine Green SRI-25



Terra Cotta SRI-43



Tile Red SRI-43



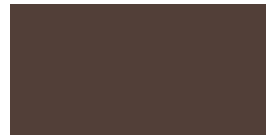
Colonial Red SRI-37



Retro Red SRI-42



Matte Black SRI-23



Matte Mansard Brown SRI-28

## Definitive Matte Collection Kynar 500® PVDF Resin

The Definitive Matte Collection is a suite of Matte finishes, providing Designers with low gloss and low sheen solutions



Midnight Bronze SRI-24



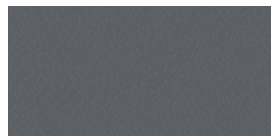
Aged Bronze SRI-23



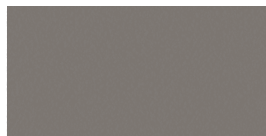
Sterling Mist SRI-41



Black Slate SRI-20



Balboa Grey SRI-23

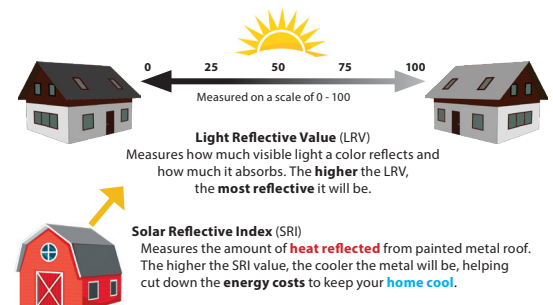


Pebble Grey SRI-37

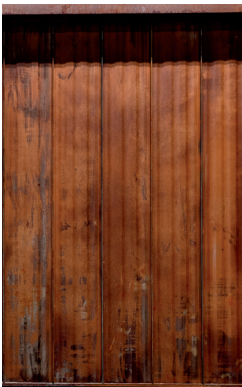
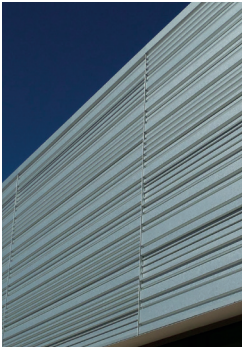
SRI values listed above are in accordance with ASTM E1980 and are based on actual testing (CRRC) Cool Roof Rating Council SRI values (CA Title 24, ENERGY STAR®) are based on the grouping of colors (color families). CRRC SRI values will differ, as each color is not tested in the color family option. Coatings are low gloss 10-15% sheen.

These printed chips provide a close representation of the colors. Metal Samples are available upon request. Custom colors available. "Oil Canning" is an inherent characteristic of roof and wall products, and not a defect, which is not a cause for panel rejection.

In partnership with:

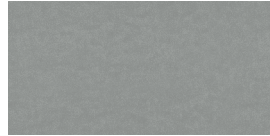






## Premium Metallic Kynar 500® PVDF Resin

*Premium Pricing Applies*



Metallic Silver SRI-60



Champagne SRI-48



Antique Patina SRI-40



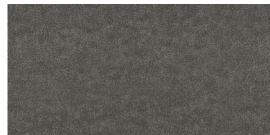
Weathered Zinc SRI-39



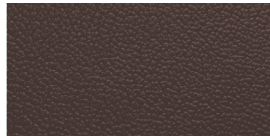
Copper Penny SRI-50

## Premium Finish

*Premium Pricing Applies*



Vintage® SRI-19



Rustic Rawhide SRI-32

Vintage® is an innovative coating process over a G-90 metallic-coated steel surface. The process creates shade variations from light to dark, the lighter shade exhibiting a grey tone while the darker shade exhibits a bronze or brown tone. The dynamic, pre-aged appearance makes this a beautiful and durable product choice that is also graffiti resistant. Vintage® comes with a 20 year warranty. Warranty can vary by environment, see TMP website for more information.

NOTE: Due to the coating process, Vintage® has a color range. Color can vary from batch-to-batch and have directional variations. Due to color ranges, color matching of this product is not available.

Textured Rustic Rawhide finish provides an unmatched color experience with an engaging combination of color and texture. This textured finish features multi-toned weathered metal design in conjunction with a wrinkled paint system for optimum authenticity. The design interacts dynamically with light to recreate the feel of traditional oxidized metal while minimizing surface sheen.

Supported by a robust warranty. This color pairs beauty and performance. Request your sample today to interact with the stimulating color.

## Weathering Materials

*These materials change appearance overtime*

Rusteel Plus™ (A606)

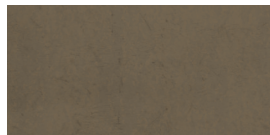


general appearance before weathering

Rusteel Plus™ is an ideal design for a historic, weathered look. Rusteel Plus™ is best suited for dryer, less humid environments. Rusteel Plus™ has no metallic coating and offers no warranty. The designer should be aware of rust runoff on decks and concrete without gutter protection or separation. Rusteel Plus™ meets ASTM A606-96 Type A. Type 4 has improved corrosion resistance when compared to carbon steel.



general appearance after weathering

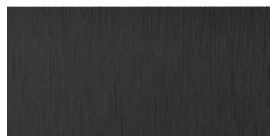


Bonderized

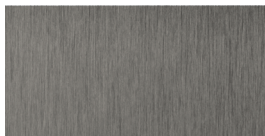
Bonderized steel is G-90 galvanized/metallic coated steel put through a phosphate bath, with a layer of Chromate applied and dried, leaving it ready to accept paint. Bonderized is often referred to as "Paint Grip," meaning that it is designed to be primed and painted in the field. Over time, Architects and Designers have begun selecting Bonderized for non-painted applications; they desire a dull gray appearance.

The Bonderizing process does not allow for a consistent pigment or color. The pigment can vary within the same coil batch. Taylor Metal Products cannot guarantee color/pigment of the panels will match within a single order. Bonderized steel has a tendency to scratch when formed and does not store well if wet.

elZinc® Finishes



elZinc Graphite®

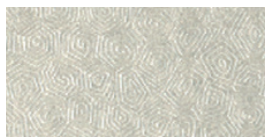


elZinc Slate® SRI-18

Designed to endure, 99% pure/natural zinc is a long-lasting material that maintains its integrity over the life of the building. elZinc® doesn't require special maintenance during its long service life. In SLATE, the pre-weathered finish is achieved using a non-polluting phosphate treatment that preserves and respects the initial properties of zinc, while in GRAPHITE, it is pre-weathered to a very dark, almost black, shade of grey.



Real Copper  
16 oz. and 20 oz. Copper  
(please inquire)



Zinalume® Plus SRI-65  
No finish warranty - 25 yr. perforation  
warranty.

Zinalume® Plus AZ-55 is a 55% aluminum, 45% zinc.

Due to batch differences, color or spangle matching of this product is not available.



Galvanized G-90 SRI-65  
Metallic coating over steel.  
No finish warranty, no perforation warranty

Name	Color Sample	SRI	24 Gauge Steel	22 Gauge Steel	20 Gauge Steel	0.032 Aluminum	0.040 Aluminum
Glacier White		85	Stocked	Stocked	Stocked	Stocked	Stocked
Matte Black		23	Stocked	Stocked	Stocked	Stocked	Stocked
Graphite Black		26	Stocked	Stocked		Stocked	Stocked
Medium Bronze		36	Stocked	Stocked	Stocked	Stocked	Stocked
Dark Bronze		22	Stocked	Stocked	Stocked	Stocked	Stocked
Charcoal Grey		25	Stocked	Stocked	Stocked	Stocked	Stocked
Weathered Zinc		39	Stocked	Stocked		Stocked	
Metallic Silver		60	Stocked	Stocked		Stocked	
Ash Grey		57	Stocked	Stocked			
Zinc Grey		39	Stocked	Stocked		Stocked	Stocked
Sterling Grey		44	Stocked	Stocked	Stocked	Stocked	
Sierra Tan		60	Stocked	Stocked		Stocked	
Real Copper		—	16oz. Stocked	20oz. Stocked			
Saddle Tan		37	Stocked	Stocked			
Musket		31	Stocked	Stocked			
Parchment		58	Stocked	Stocked			
Matte Mansard Brown		28	Stocked	Stocked			
Terra Cotta		43	Stocked	Stocked			
Colonial Red		37	Stocked	Stocked			
Hemlock Green		36	Stocked	Stocked			
Tahoe Blue		31	Stocked	Stocked			
Champagne Metallic		48	Stocked	Stocked			
Zincalume		65	Stocked	Stocked			
Galvanized		65	Stocked	Stocked			
Rusteel Plus™ (A606)		—		Stocked			
eIZinc Graphite® (real zinc)		—	Stocked (please inquire)	Stocked (please inquire)			
eIZinc Slate® (real zinc)		18	Stocked (please inquire)	Stocked (please inquire)			
Rustic Rawhide		32	Stocked				
Vintage®		19	Stocked				
Tile Red		35	Stocked				
Retro Red		42	Stocked				
Forest Green		24	Stocked				
Pine Green		25	Stocked				
Pacific Blue		26	Stocked				
Antique Patina		40	Stocked				
Copper Penny		50	Stocked				
Bonderized		—	Stocked				
Midnight Bronze		24	Stocked	Stocked			
Aged Bronze		23	Stocked	Stocked			
Sterling Mist		41	Stocked	Stocked			
Black Slate		20	Stocked	Stocked			
Balboa Grey		23	Stocked	Stocked			
Pebble Grey		37	Stocked	Stocked			

PVDF is a fluoropolymer that is manufactured under the trademarked names Kynar 500® and Duranar (PPG). Paint finishes containing a minimum 70% PVDF resin meet the high-performance weathering criteria established by the American Architectural Manufacturing Association and are allowed to carry the Kynar500® trademarked name. Zincalume & Zincalume® Plus are registered trademarks of Bluescope Ltd. Galvalume® is a registered trademark of BIEC International, Inc. Vintage® is a registered trademark of Steelscape, Inc. Kynar® and Kynar 500® is a registered trademarks of Arkema, Inc.