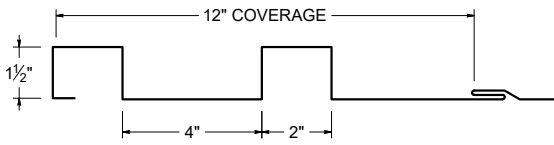




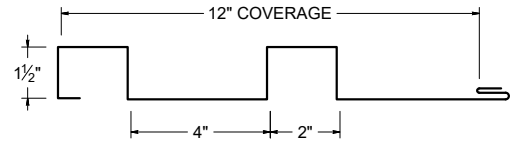
ICC-ES EVALUATION REPORT #5045 with CBC-CRC Supplement (coming 2024)

SCREW FLANGE ATTACHMENT



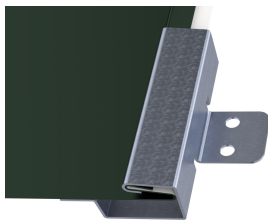
Screw Flange panels in this profile require additional material (drop/waste) and must be slit to a custom size. Inquire for custom pricing and availability.

CLIP ATTACHMENT

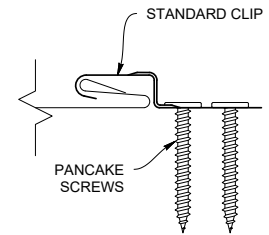
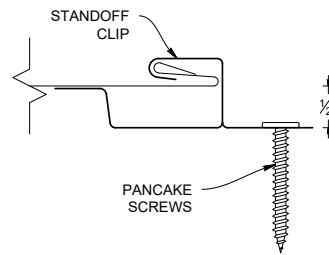
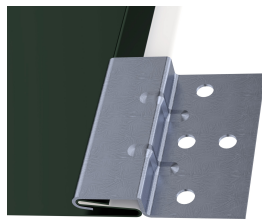


PANEL ATTACHMENT CLIP

STANDOFF CLIP




STANDARD CLIP



KEY FEATURES

- 12" panel coverage
- 24 and 22 Tru-Gauge™ and .032" and .040" Aluminum. Screw Flange and Clip attachment available
- Custom 20 & 18 Tru-Gauge™ and .050" and .063" Aluminum. These require the use of high performance clip. (please inquire)
- 1-1/2" deep panel
- 2' to 20'10" panel lengths
- Custom profiles available
- Vertical or Horizontal Wall Application
- Acceptable for use as a soffit panel
- Interchangeable panel widths and configurations
- Perforated options available (please inquire)

TESTING

-  ICC-ESR #5045 with CBC-CRC Supplement (coming 2024)
- ASTM E331 - Water infiltration (wall)
- ASTM E283 - Air infiltration (wall)
- ASTM E1592 - Structural uniform static air pressure
- ASTM E1680 - Air infiltration (roof)
- ASTM E1646 - Water infiltration (roof)
- ASTM A653/A924 - G90 Galvanized
- ASTM A792 - Zincalume/Galvalume AZ-50/55
- ASTM B209 - Aluminum Substrate

WEIGHT CHART

NX-3A	TYPE	24 GA STEEL	22 GA STEEL	20 GA STEEL	18 GA STEEL	.063" ALUM	.050" ALUM	.040" ALUM	.032" ALUM
THICKNESS		0.0236"	0.0285"	0.0356"	0.0466"	0.063"	0.050"	0.040"	0.032"
WEIGHT/LINFT	CLIP ATTACH	1.685 LBS	1.975 LBS	2.467 LBS	3.229 LBS	1.525 LBS	1.211 LBS	0.968 LBS	0.798 LBS
WEIGHT/SQFT	CLIP ATTACH	1.685 LBS	1.975 LBS	2.467 LBS	3.229 LBS	1.525 LBS	1.211 LBS	0.968 LBS	0.798 LBS
WEIGHT/LINFT	SCREW FLANGE	1.830 LBS	2.331 LBS	2.912 LBS	3.812 LBS	1.801 LBS	1.429 LBS	1.143 LBS	0.867 LBS
WEIGHT/SQFT	SCREW FLANGE	1.830 LBS	2.331 LBS	2.912 LBS	3.812 LBS	1.801 LBS	1.429 LBS	1.143 LBS	0.867 LBS

ASTM E 1680/E283 Air Penetration	ASTM E 1646/E331 Water Penetration
12 PSF<0.01 CFM/ft²-PASS	20.5 PSF - Pass
Intertek Test Result L5460.01-901-44 R1	
Intertek Test Result L5461.01-901-44 R1	