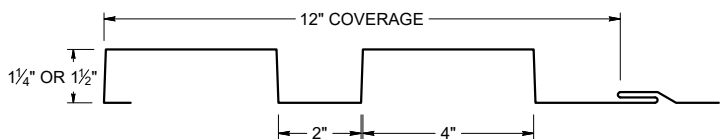




ICC
EVALUATION
SERVICE®

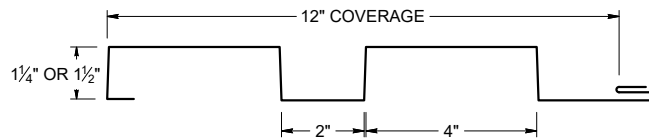
ICC-ES EVALUATION REPORT #5045 with CBC-CRC Supplement

SCREW FLANGE ATTACHMENT



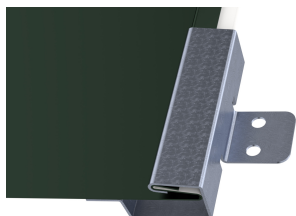
Screw Flange panels in this profile require additional material (drop/waste) and must be slit to a custom size. Inquire for custom pricing and availability.

CLIP ATTACHMENT

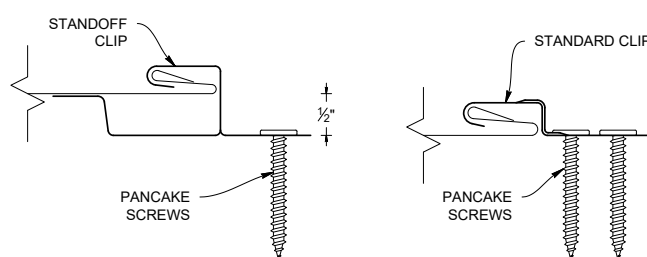
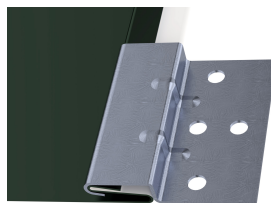


PANEL ATTACHMENT CLIP

STANDOFF CLIP




STANDARD CLIP



KEY FEATURES

- 12" panel coverage
- 24 and 22 Tru-Gauge™ and .032" and .040 Aluminum. Screw Flange and Clip attachment available
- Custom 20 & 18 Tru-Gauge™ and .050" and .063" Aluminum. These require the use of high performance clip. (please inquire)
- 2' to 20'10" panel lengths
- Custom profiles available
- Vertical or Horizontal Wall Application
- Acceptable for use as a soffit panel
- Interchangeable panel widths and configurations
- Perforated options available (please inquire)

TESTING

-  ICC-ESR #5045 with CBC-CRC Supplement
- ASTM E331 - Water infiltration (wall)
- ASTM E283 - Air infiltration (wall)
- ASTM E1592 - Structural uniform static air pressure
- ASTM E330 - Positive structural uniform static air pressure
- ASTM E1680 - Air infiltration (roof)
- ASTM E1646 - Water infiltration (roof)
- ASTM A653/A924 - G90 Galvanized
- ASTM A792 - Zincalume/Galvalume AZ-50/55
- ASTM B209 - Aluminum Substrate

WEIGHT CHART (Values based on 1-1/4" panels, inquire for 1-1/2")

| C-8 | TYPE | 24 GA STEEL | 22 GA STEEL | .032 ALUM | .040 ALUM |
|--------------|--------------|-------------|-------------|-----------|-----------|
| THICKNESS | | 0.0236" | 0.0285" | 0.032" | 0.040" |
| WEIGHT/LINFT | CLIP ATTACH | 1.685 LBS | 1.971 LBS | 0.798 LBS | 0.967 LBS |
| WEIGHT/LSQFT | CLIP ATTACH | 1.685 LBS | 1.971 LBS | 0.798 LBS | 0.967 LBS |
| WEIGHT/LINFT | SCREW FLANGE | 1.828 LBS | 2.328 LBS | 0.866 LBS | 1.142 LBS |
| WEIGHT/LSQFT | SCREW FLANGE | 1.828 LBS | 2.328 LBS | 0.866 LBS | 1.142 LBS |

| ASTM E 1680/E283 Air Penetration | ASTM E 1646/E331 Water Penetration |
|---|---------------------------------------|
| 12 PSF<0.01 CFM/ft²-PASS | 20.5 PSF - Pass |
| Intertek Test Result L5460.01-901-44 R1 | |
| Intertek Test Result L5461.01-901-44 R1 | |
| STRUCTURAL TESTING ASTM E1592 AND E330 | |
| Intertek Test Result M7269.01-301-44 R0 | |

NEGATIVE LOAD CHART WITH CLIP ATTACHMENT

| SECTION PROPERTIES | | | | ALLOWABLE UNIFORM LOADS, psf For various clip spacings (i.e. span values) | | | | | | | | | | | | |
|--------------------|--------|----|------|--|--|---------------------------------|----------------------------------|--|---------------------------------|---------------|-------|-------|-------|-------|------|------|
| | | | | Top in Compression | | | Bottom in Compression | | | Negative Load | | | | | | |
| | | | | I_{xx} in ⁴ /ft. | I_{xx} (eff) in ⁴ /ft. | S_{xx} in ³ /ft | I_{xx} in ⁴ /ft. | I_{xx} (eff) in ⁴ /ft. | S_{xx} in ³ /ft | 1' | 1.5' | 2' | 2.5' | 3' | 3.5' | 4' |
| 12 | 24 | 50 | 1.39 | 0.0770 | 0.0845 | 0.0952 | 0.1031 | 0.0955 | 0.1307 | 162.5 | 145.8 | 129.2 | 112.5 | 95.8 | 79.2 | 62.5 |
| 12 | 22 | 50 | 1.65 | 0.0967 | 0.1056 | 0.1229 | 0.1275 | 0.1185 | 0.1653 | 212.5 | 187.5 | 162.5 | 137.5 | 112.5 | 87.5 | 62.5 |
| 12 | 20 | 33 | 2.01 | 0.1268 | 0.1374 | 0.1670 | 0.1636 | 0.1529 | 0.2183 | 212.5 | 187.5 | 162.5 | 137.5 | 112.5 | 87.5 | 62.5 |
| 12 | 18 | 33 | 2.60 | 0.1960 | 0.2070 | 0.2845 | 0.2370 | 0.2250 | 0.3393 | 212.5 | 187.5 | 162.5 | 137.5 | 112.5 | 87.5 | 62.5 |
| 12 | 0.032" | 19 | 0.52 | 0.1820 | 0.1820 | 0.3169 | 0.1820 | 0.1820 | 0.2686 | 125.0 | 115.8 | 106.7 | 97.5 | 88.3 | 79.2 | 70.0 |
| 12 | 0.040" | 19 | 1.14 | 0.2240 | 0.2240 | 0.3907 | 0.2240 | 0.2240 | 0.3947 | 125.0 | 115.8 | 106.7 | 97.5 | 88.3 | 79.2 | 70.0 |

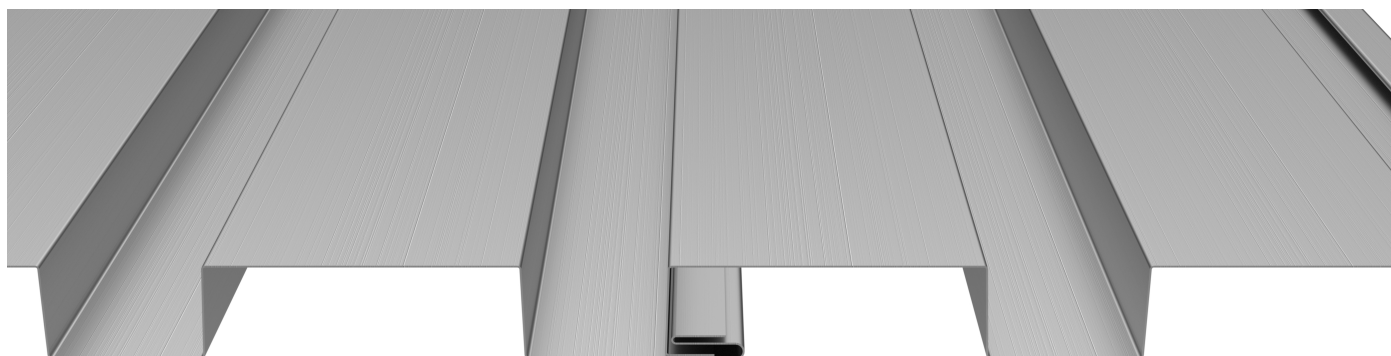
- Theoretical section properties for still panels have been calculated per AISI S100 Specifications for Design of Cold-Formed Steel Structural Members. Intertek M7269.01-301-44 R0
- Charted Load/Span values are based on ASTM E1592-05, divided by a 2.00 Factor-of-Safety.
- Minimum recommended substrate (structure) recommendations:
 - Open-Framing (i.e. purlins)-16ga (design thickness 0.0566")
 - Plywood/OSB-15/32" or thicker is recommended to assure an effective degree of fastener thread engagement.
 - METAL DECK - 22ga (design thickness 0.0283")

POSITIVE LOAD CHART WITH CLIP ATTACHMENT

| SECTION PROPERTIES | | | | ALLOWABLE UNIFORM LOADS, psf For various clip spacings (i.e. span values) | | | | | | | | | | | | | | | |
|--------------------|--------|----|------|--|--|---------------------------------|----------------------------------|--|---------------------------------|---------------|--------|-------|-------|-------|-------|-------|-------|------|------|
| | | | | Top in Compression | | | Bottom in Compression | | | Positive Load | | | | | | | | | |
| | | | | I_{xx} in ⁴ /ft. | I_{xx} (eff) in ⁴ /ft. | S_{xx} in ³ /ft | I_{xx} in ⁴ /ft. | I_{xx} (eff) in ⁴ /ft. | S_{xx} in ³ /ft | 1' | 2' | 3' | 4' | 5' | 6' | 7' | 8' | 9' | 10' |
| 12 | 24 | 50 | 1.39 | 0.0770 | 0.0845 | 0.0952 | 0.1031 | 0.0955 | 0.1307 | 1064.6 | 532.3 | 264.4 | 148.8 | 95.2 | 66.1 | 48.6 | 37.2 | 29.4 | 23.8 |
| 12 | 22 | 50 | 1.65 | 0.0967 | 0.1056 | 0.1229 | 0.1275 | 0.1185 | 0.1653 | 1465.5 | 732.73 | 341.4 | 192.0 | 122.9 | 85.35 | 62.7 | 48.0 | 37.9 | 30.7 |
| 12 | 20 | 33 | 2.01 | 0.1268 | 0.1374 | 0.1670 | 0.1636 | 0.1529 | 0.2183 | 1410.9 | 695.83 | 309.3 | 174.0 | 111.3 | 77.3 | 56.8 | 43.5 | 34.4 | 27.8 |
| 12 | 18 | 33 | 2.60 | 0.1960 | 0.2070 | 0.2845 | 0.2370 | 0.2250 | 0.3393 | 2024.6 | 1012.3 | 526.9 | 296.4 | 189.7 | 131.7 | 96.77 | 74.09 | 58.5 | 47.4 |
| 12 | 0.032" | 19 | 0.52 | 0.1820 | 0.1820 | 0.3169 | 0.1820 | 0.1820 | 0.2686 | 161.8 | 80.9 | 53.9 | 40.5 | 32.4 | 27.0 | 23.12 | 20.23 | 18.0 | 14.8 |
| 12 | 0.040" | 19 | 1.14 | 0.2240 | 0.2240 | 0.3907 | 0.2240 | 0.2240 | 0.3947 | 258.2 | 129.1 | 56.1 | 64.6 | 51.6 | 43.0 | 36.33 | 32.27 | 27.1 | 21.9 |

- Theoretical section properties for Steel panel have been calculated per 2020 AISI S100 North America Specifications for the Design of Cold-Formed Steel Structural Member.
- Allowable loads for Steel panels are calculated in accordance with 2020 AISI S100 specifications considering bending, shear, combined bending and shear and deflection. Allowable load considers a 3 or more equal span condition.
- When panels are installed over solid or closely fitted sheathing, the capacity is limited to the capacity of the underlying sheathing.

PANEL ATTACHMENT



Fastener Notes:

- When possible, lap panels away from prevailing wind direction.
- 15/32" OSB: #10 Burr Buster fasteners.
- 15/32" Plywood: #10 GP Fastener. Screws should be long enough to penetrate through the bottom of the plywood by 3/8".
- Dimensional lumber: #10 GP. Screws should penetrate the lumber 1".
- 16ga (or less) Steel furring: #10 or #12 Fastener with DP-1
- All trim screws used for roof or wall applications should have EPDM sealing washers.