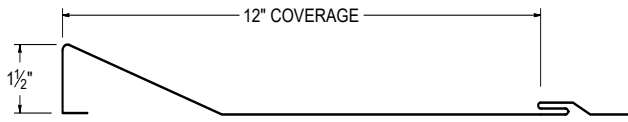




ICC
EVALUATION
SERVICE®

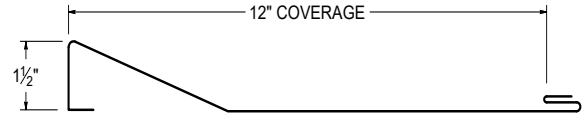
ICC-ES EVALUATION REPORT #5045 with CBC-CRC Supplement (Coming 2024)

SCREW FLANGE ATTACHMENT



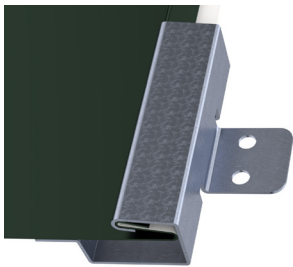
Screw flange available at additional cost

CLIP ATTACHMENT

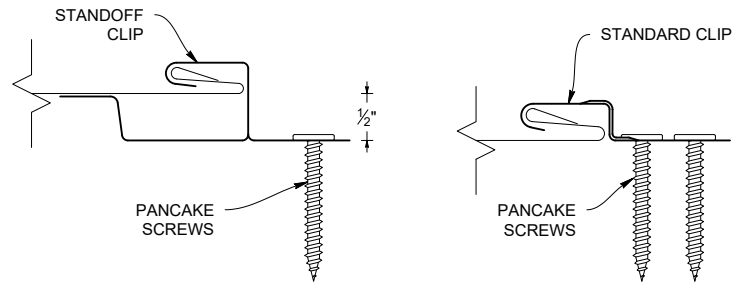
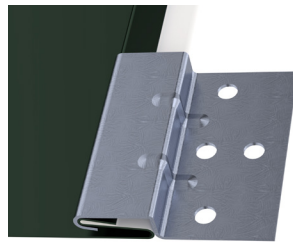


PANEL ATTACHMENT CLIP

STANDOFF CLIP




STANDARD CLIP



KEY FEATURES

- 12" panel coverage
- 24 and 22 Tru-Gauge™ and .032" and .040 Aluminum. Screw Flange and Clip attachment available
- Custom 20 & 18 Tru-Gauge™ and .050" and .063" Aluminum. These require the use of high performance clip. (please inquire)
- 2' to 20'10" panel lengths
- Custom profiles available
- Vertical or Horizontal Wall Application
- Acceptable for use as a soffit panel
- Interchangeable panel widths and configurations
- Perforated options available (please inquire)

TESTING (Coming 2024)

-  ICC-ESR #5045 with CBC-CRC Supplement
- ASTM E331 - Water infiltration (wall)
- ASTM E283 - Air infiltration (wall)
- ASTM E1592 - Negative structural uniform static air pressure
- ASTM E1680 - Air infiltration (roof)
- ASTM E1646 - Water infiltration (roof)
- ASTM A653/A924 - G90 Galvanized
- ASTM A792 - Zincalume/Galvalume AZ-50/55
- ASTM B209 - Aluminum Substrate

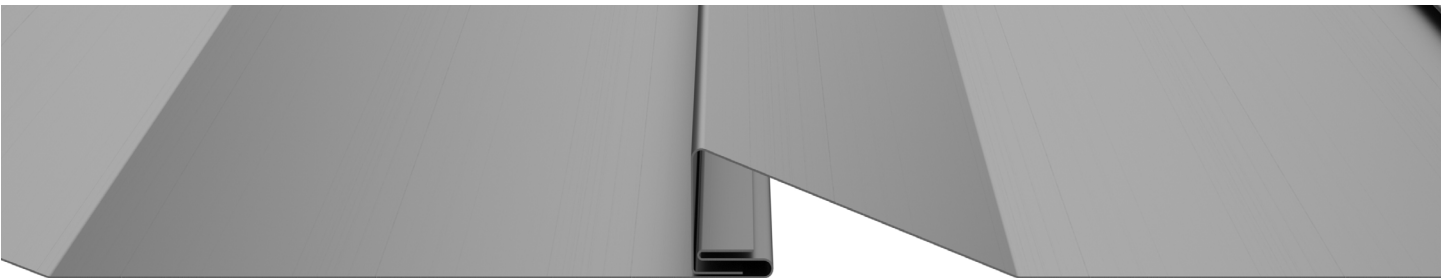
WEIGHT CHART (Values based on 1" panels, inquire for 1-1/2")

CR-D	TYPE	24 GA STEEL	22 GA STEEL	.032 ALUM
THICKNESS		0.0236"	0.0285"	0.032"
WEIGHT/LINFT	CLIP ATTACH	1.609 LBS	1.943 LBS	0.762 LBS
WEIGHT/LSQFT	CLIP ATTACH	1.609 LBS	1.943 LBS	0.762 LBS
WEIGHT/LINFT	SCREW FLANGE	1.750 LBS	2.114 LBS	0.829 LBS
WEIGHT/LSQFT	SCREW FLANGE	1.750 LBS	2.114 LBS	0.829 LBS

ASTM E 1680/E283 Air Penetration	ASTM E 1646/E331 Water Penetration
12 PSF<0.01 CFM/ft²-PASS	20.5 PSF - Pass
Intertek Test Result L5461.01-901-44 R1	
Intertek Test Result L5460.01-901-44 R1	
STRUCTURAL TESTING ASTM E 1592	
Intertek Test Result Q2599.12-301-44 R0	



PANEL ATTACHMENT



Fastener Notes:

- When possible, lap panels away from prevailing wind direction.
- Panel screws should be long enough to penetrate through the bottom of the plywood by 3/8".
- For dimensional lumber, panel screws should penetrate the lumber 1".
- All trim screws used for roof or wall applications should have EPDM sealing washers.
- Clean off working area each day to remove metal particles left from drilling fasteners. These particles, when exposed to moisture, will form rust between metal particles and the panel.

Rev. Date 12-23