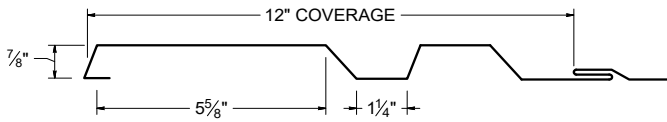




ICC  
EVALUATION  
SERVICE®

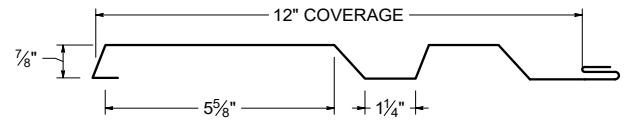
ICC-ES EVALUATION REPORT #5045 with CBC-CRC Supplement

#### SCREW FLANGE ATTACHMENT



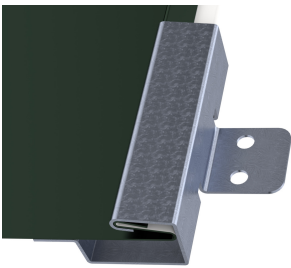
Screw Flange panels in this profile require additional material (drop/waste) and must be slit to a custom size. Inquire for custom pricing and availability.

#### CLIP ATTACHMENT

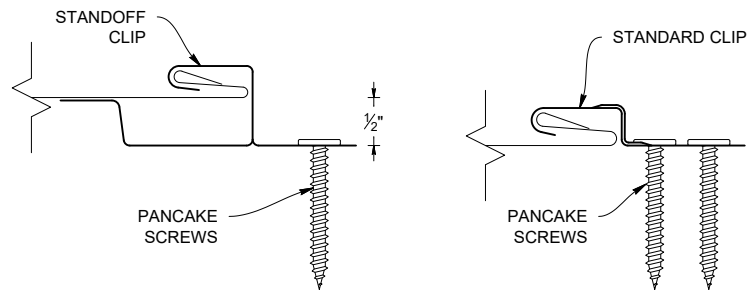
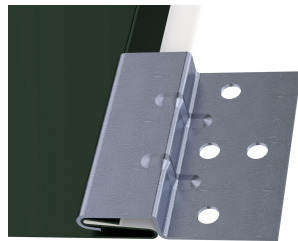


### PANEL ATTACHMENT CLIP

#### STANDOFF CLIP




#### STANDARD CLIP



### KEY FEATURES

- 12" panel coverage
- 24 and 22 Tru-Gauge™ and .032" and .040 Aluminum. Screw Flange and Clip attachment available
- Custom 20 & 18 Tru-Gauge™ and .050" and .063" Aluminum. These require the use of high performance clip. (please inquire)
- 2' to 20'10" panel lengths
- Custom profiles available
- Vertical or Horizontal Wall Application
- Acceptable for use as a soffit panel
- Interchangeable panel widths and configurations
- Perforated options available (please inquire)

### TESTING

-  ICC-ESR #5045 with CBC-CRC Supplement
- ASTM E331 - Water infiltration (wall)
- ASTM E283 - Air infiltration (wall)
- ASTM E1592 - Negative structural uniform static air pressure
- ASTM E1680 - Air infiltration (roof)
- ASTM E1646 - Water infiltration (roof)
- ASTM A653/A924 - G90 Galvanized
- ASTM A792 - Zincalume/Galvalume AZ-50/55
- ASTM B209 - Aluminum Substrate

### WEIGHT CHART

CI-3-12	TYPE	24 GA STEEL	22 GA STEEL	.032 ALUM	.040 ALUM
THICKNESS		0.0236"	0.0285"	0.032"	0.040"
WEIGHT/LINFT	CLIP ATTACH	1.366 LBS	1.651 LBS	0.647 LBS	0.809 LBS
WEIGHT/LSQFT	CLIP ATTACH	1.366 LBS	1.651 LBS	0.647 LBS	0.809 LBS
WEIGHT/LINFT	SCREW FLANGE	1.512 LBS	1.886 LBS	0.716 LBS	0.925 LBS
WEIGHT/LSQFT	SCREW FLANGE	1.512 LBS	1.886 LBS	0.716 LBS	0.925 LBS

ASTM E 1680/E283 Air Penetration	ASTM E 1646/E331 Water Penetration
12 PSF < 0.01 CFM/ft² - PASS	20.5 PSF - Pass
Intertek Test Result L5460.01-901-44 R1	
Intertek Test Result L5461.01-901-44 R1	
STRUCTURAL TESTING ASTM E1592 AND E330	
Intertek Test Result Q2599.05-301-44 R0	

## NEGATIVE LOAD CHART WITH CLIP ATTACHMENT

Width, in. Gauge Yield ksi Weight psf				SECTION PROPERTIES						ALLOWABLE UNIFORM LOADS, psf For various clip spacings (i.e. span values)								
				Top in Compression			Bottom in Compression			Negative Load								
				$I_{xx}$ in <sup>4</sup> /ft.	$I_{xx}$ (eff) in <sup>4</sup> /ft.	$S_{xx}$ in <sup>3</sup> /ft.	$I_{xx}$ in <sup>4</sup> /ft.	$I_{xx}$ (eff) in <sup>4</sup> /ft.	$S_{xx}$ in <sup>3</sup> /ft.	1'	1.5'	2'	2.5'	3'	3.5'	4'	4.5'	5'
12	24	50	1.38	0.0332	0.0369	0.0622	0.0459	0.0422	0.0807	180.0	165.6	151.3	136.9	122.5	108.1	93.8	79.4	65.0
12	22	50	1.63	0.0461	0.0492	0.0794	0.0567	0.0536	0.1013	165.0	150.0	135.0	120.0	105.0	90.0	75.0	60.0	45.0
12	20	33	1.99	0.0582	0.0631	0.1187	0.0750	0.0701	0.1381	165.0	150.0	135.0	120.0	105.0	90.0	75.0	60.0	45.0
12	18	33	2.58	0.0810	0.0868	0.1701	0.1010	0.0952	0.1871	165.0	150.0	135.0	120.0	105.0	90.0	75.0	60.0	45.0

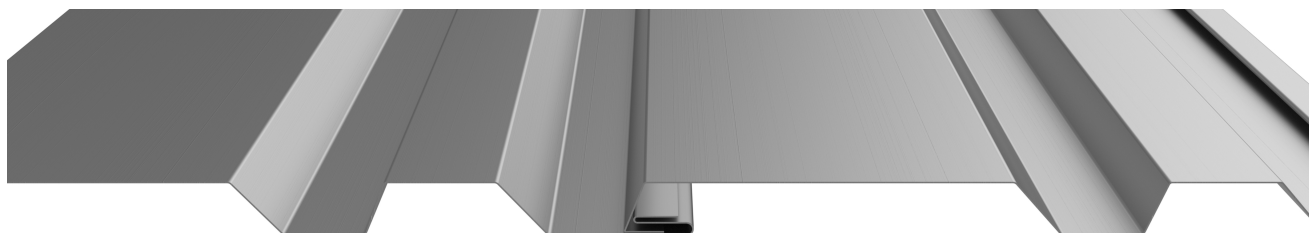
- Theoretical section properties for steel panels have been calculated per AISI S100 Specifications for Design of Cold-Formed Steel Structural Members. Intertek Q2599.05-301-44 R0
- Charted Load/Span values are based on ASTM E1592-05, divided by a 2.00 Factor-of-Safety.
- Minimum recommended substrate (structure) recommendations:
  - Open-Framing (i.e. purlins) - 16ga (design thickness = 0.0566")
  - Plywood/OSP - 15/32" or thicker is recommended to assure an effective degree of fastener thread engagement.
  - Metal deck - 22ga (design thickness = 0.0283")

## POSITIVE LOAD CHART WITH CLIP ATTACHMENT

Width, in. Gauge Yield ksi Weight psf				SECTION PROPERTIES						ALLOWABLE UNIFORM LOADS, psf For various clip spacings (i.e. span values)									
				Top in Compression			Bottom in Compression			Positive Load									
				$I_{xx}$ in <sup>4</sup> /ft.	$I_{xx}$ (eff) in <sup>4</sup> /ft.	$S_{xx}$ in <sup>3</sup> /ft.	$I_{xx}$ in <sup>4</sup> /ft.	$I_{xx}$ (eff) in <sup>4</sup> /ft.	$S_{xx}$ in <sup>3</sup> /ft.	1'	2'	3'	4'	5'	6'	7'	8'	9'	10'
12	24	50	1.38	0.0332	0.0369	0.0622	0.0459	0.0422	0.0807	376.4	188.2	125.5	94.1	62.2	43.2	31.7	24.3	19.2	15.5
12	22	50	1.63	0.0461	0.0492	0.0794	0.0567	0.0536	0.1013	543.6	271.8	181.2	124.1	79.4	55.1	40.5	31.0	24.5	19.9
12	20	33	1.99	0.0582	0.0631	0.1187	0.0750	0.0701	0.1381	598.2	299.1	199.4	122.4	78.3	54.4	40.0	30.6	24.2	19.6
12	18	33	2.58	0.0810	0.0868	0.1701	0.1010	0.0952	0.1871	942.7	471.4	311.9	175.4	112.3	78.0	57.3	43.9	34.7	28.1

- Theoretical section properties for steel panels have been calculated per 2020 AISI S100 North America Specifications for Design of Cold-Formed Steel Structural Members.
- Allowable loads for steel panels are calculated in accordance with 2020 AISI S100 specifications considering bending, shear, combined bending and shear and deflection. Allowable load considers a 3 or more equal span condition.
- When panels are installed over solid or closely fitted sheathing, the capacity is limited to the capacity of the underlying sheathing.

## PANEL ATTACHMENT



### Fastener Notes:

- When possible, lap panels away from prevailing wind direction.
- 15/32" OSB: #10 Burr Buster fasteners.
- 15/32" Plywood: #10 GP fastener. Screws should be long enough to penetrate through the bottom of the plywood by 3/8".
- Dimensional lumber: #10 GP. Screws should penetrate the lumber 1".
- 16ga (or less) Steel furring: #10 or #12 fastener with DP-1.
- All trim screws used for roof or wall applications should have EPDM sealing washers.